

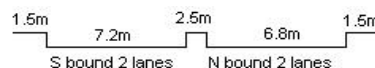
YEAR 2019

COVERAGE (B) STATION 6213

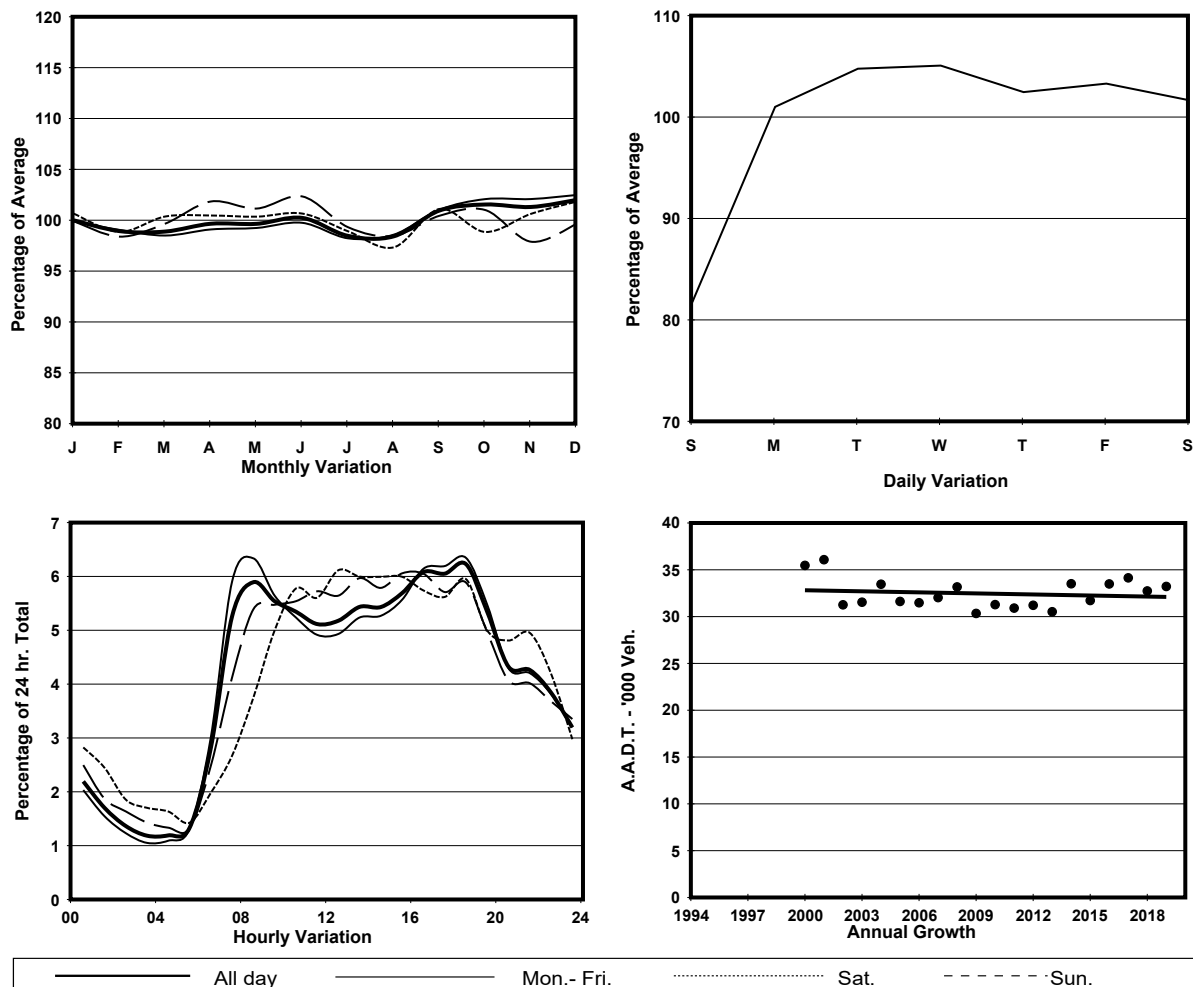
ROAD NETWORK MAJOR

ROAD TYPE RURAL TRUNK ROAD

LINK CASTLE PEAK RD - HUNG SHUI KIU (from TIN HA RD to LAM TEI INT)



## 1. TRAFFIC FLOW VARIATION AND GROWTH



## 2. TRAFFIC CHARACTERISTICS (BY DIRECTION)

Parameter	All - Day	Mon. - Fri.	Sat.	Sun.
<b>SOUTH BOUND</b>				
A.A.D.T.	16740	17450	17300	13790
R 12 / 24 - %	70.3	71	69.8	66.9
R 16 / 24 - %	85.3	85.7	84.4	83.6
AM Peak Hour	0700-0800	0700-0800	0800-0900	0900-1000
One-way flow at AM peak hour	1150	1370	1090	760
T - % (AM)	-	24.1	-	-
PM Peak Hour	1600-1700	1600-1700	1600-1700	1800-1900
One-way flow at PM peak hour	990	1040	1010	780
T - % (PM)	-	14.7	-	-
Prop.of commercial vehicles - 16 hr.	-	18.8	-	-
<b>NORTH BOUND</b>				
A.A.D.T.	16480	17220	16780	13660
R 12 / 24 - %	64.1	64.5	64.9	61.5
R 16 / 24 - %	84.8	85.3	83.8	82.7
AM Peak Hour	0800-0900	0800-0900	0900-1000	0900-1000
One-way flow at AM peak hour	860	980	790	610
T - % (AM)	-	20.8	-	-
PM Peak Hour	1800-1900	1800-1900	1800-1900	1800-1900
One-way flow at PM peak hour	1130	1210	1100	860
T - % (PM)	-	11.8	-	-
Prop.of commercial vehicles - 16 hr.	-	18.4	-	-

## 3. OTHER INFORMATION AND COMMENT

**4. Vehicle classification and occupancy - Monday to Friday**

Time		Class of vehicle									
		Motor Cycle	Private Car	Taxi	Private LB	PLB	Goods veh.		Non Fr. Bus	Fr. Bus	
							Light	M & H		SD	DD
0700-0800	Pro	2.7	35.5	12.7	1.1	2.1	22.3	15.9	4.8	0.1	2.8
	Ocp	1.1	1.3	1.5	14.3	12.4	1.4	1.1	14.0	19.0	50.0
0800-0900	Pro	2.0	51.8	12.7	1.0	1.2	13.2	13.6	2.9	0.1	1.4
	Ocp	1.0	1.2	1.7	8.2	9.3	1.5	1.1	4.8	20.5	37.6
0900-1000	Pro	1.4	40.1	12.2	2.4	1.4	21.3	17.1	2.0	0.1	2.0
	Ocp	1.0	1.2	1.6	2.7	10.0	1.4	1.1	2.0	8.5	22.0
1000-1100	Pro	0.3	29.8	16.5	1.1	1.9	23.2	22.6	2.4	0.3	2.0
	Ocp	1.0	1.2	1.5	1.5	9.0	1.4	1.1	2.1	14.8	24.0
1100-1200	Pro	0.8	36.5	15.4	1.8	1.8	19.9	20.4	1.0	0.2	2.3
	Ocp	1.0	1.4	1.6	1.3	9.0	1.3	1.1	3.0	13.7	28.7
1200-1300	Pro	3.0	35.8	15.5	1.0	2.3	18.0	20.8	1.3	0.2	2.3
	Ocp	1.2	1.3	1.7	5.0	6.2	1.4	1.1	10.4	13.3	23.6
1300-1400	Pro	2.4	40.7	12.5	1.2	1.4	16.3	21.5	2.1	0.2	1.6
	Ocp	1.1	1.4	1.6	2.0	8.8	1.5	1.1	3.6	11.8	15.7
1400-1500	Pro	1.2	35.1	16.3	0.2	1.5	21.2	20.5	2.2	0.4	1.4
	Ocp	1.2	1.5	1.4	1.0	9.8	1.4	1.1	3.8	20.8	23.4
1500-1600	Pro	2.1	39.1	13.3	2.6	1.9	20.2	17.8	1.2	0.1	1.7
	Ocp	1.0	1.4	1.4	3.1	6.4	1.3	1.1	15.8	33.0	27.8
1600-1700	Pro	1.9	36.5	20.1	3.2	1.3	19.5	13.4	2.7	0.1	1.4
	Ocp	1.0	1.3	1.4	5.9	11.4	1.4	1.0	5.9	14.0	36.8
1700-1800	Pro	3.2	38.1	19.6	3.4	1.3	17.1	13.2	2.6	0.2	1.2
	Ocp	1.1	1.5	1.9	3.8	13.1	1.5	1.1	4.9	22.6	35.4
1800-1900 Peak hour	Pro	4.3	50.0	13.5	1.0	1.5	17.8	8.0	2.5	0.1	1.3
	Ocp	1.1	1.4	1.9	2.3	16.2	1.4	1.2	7.5	17.0	48.1
1900-2000	Pro	2.7	54.6	20.1	0.2	2.3	10.8	4.2	3.7	0.2	1.2
	Ocp	1.2	1.4	1.8	1.0	15.5	1.3	1.0	8.2	16.3	41.0
2000-2100	Pro	1.9	58.2	18.0	0.0	2.3	8.0	4.8	4.2	0.2	2.3
	Ocp	1.0	1.5	1.6	0.0	12.1	1.4	1.1	3.1	14.5	26.2
2100-2200	Pro	2.9	59.9	21.2	0.0	1.8	7.7	0.4	3.7	0.4	2.2
	Ocp	1.1	1.2	1.6	0.0	11.6	1.3	1.0	6.5	12.0	25.4
2200-2300	Pro	1.7	45.7	31.6	1.3	2.6	12.0	1.7	0.9	0.1	2.5
	Ocp	1.3	1.3	1.6	2.3	8.8	1.5	1.3	8.5	10.0	23.8
16 hours	Pro	2.2	42.5	16.4	1.5	1.7	17.1	14.1	2.5	0.2	1.8
	Ocp	1.1	1.4	1.6	4.2	10.7	1.4	1.1	6.5	16.8	30.7

**Legend: Pro.** Proportion of vehicles in % (Sum may not add up to 100% due to figure rounding)\*

**Ocp.** Average occupancy of vehicles including both driver and passengers\*

**M&H** Medium and Heavy

\* All traffic data are collected from combined bounds